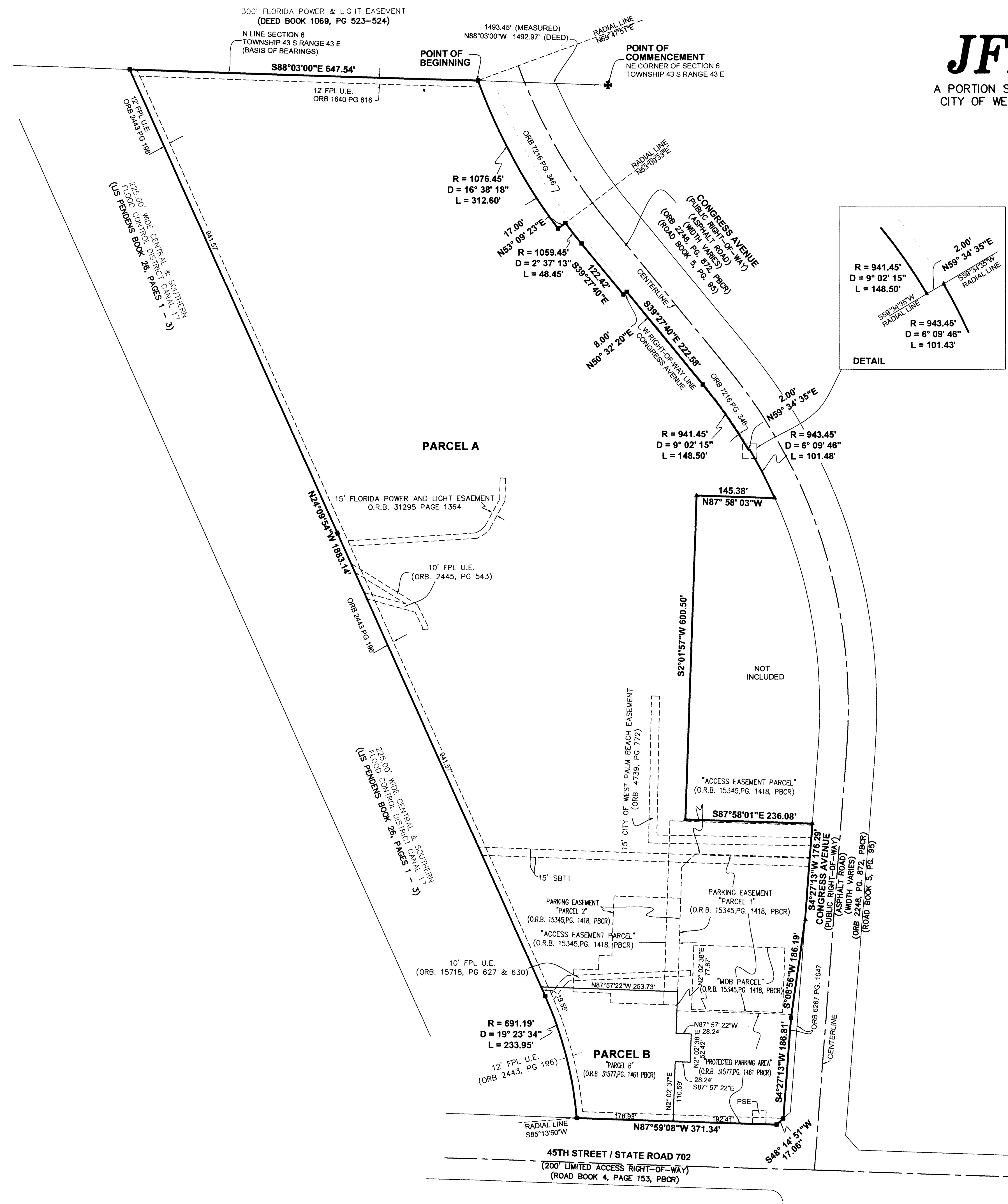


JFK NORTH

A PORTION SECTION 6, TOWNSHIP 43 SOUTH, RANGE 43 EAST,
CITY OF WEST PALM BEACH, PALM BEACH COUNTY, FLORIDA

2

SHEET 2 OF 2



SURVEY NOTES:

- IN THOSE CASES WHERE EASEMENTS OF DIFFERENT TYPES CROSS OR OTHERWISE COINCIDE, DRAINAGE EASEMENTS SHALL HAVE FIRST PRIORITY, UTILITY EASEMENTS SHALL HAVE SECOND PRIORITY, ACCESS EASEMENTS SHALL HAVE THIRD PRIORITY, AND ALL OTHER EASEMENTS SHALL BE SUBORDINATE TO THESE WITH THEIR PRIORITIES BEING DETERMINED BY USE RIGHTS GRANTED.
- BUILDING SETBACK LINES SHALL BE AS REQUIRED BY CURRENT CITY OF WEST PALM BEACH ZONING REGULATIONS.
- NO BUILDINGS OR ANY KIND OF CONSTRUCTION OR TREES OR SHRUBS SHALL BE PLACED ON DRAINAGE EASEMENTS, EXCEPT DRIVEWAYS.
- APPROVAL OF LANDSCAPING ON UTILITY EASEMENTS, SHALL BE ONLY WITH APPROVAL OF ALL UTILITIES OCCUPYING SAME.
- O.R.B. - OFFICIAL RECORD BOOK
- P.R.M. - INDICATES SET PERMANENT REFERENCE MONUMENT MARKED LB3591, UNLESS NOTED OTHERWISE
- U.E. - INDICATES UTILITY EASEMENT.
- D.E. - INDICATES DRAINAGE EASEMENT.
- INES INTERSECTING CURVES ARE NON-RADIAL UNLESS SHOWN OTHERWISE.
- "NOTICE" THIS PLAT, AS RECORDED IN ITS GRAPHIC FORM, IS THE OFFICIAL DEPICTION OF THE SUBDIVIDED LANDS DESCRIBED HEREIN AND WILL IN NO CIRCUMSTANCES BE SUPPLANTED IN AUTHORITY BY ANY OTHER GRAPHIC OR DIGITAL FORM OF THE PLAT. THERE MAY BE ADDITIONAL RESTRICTIONS THAT ARE NOT RECORDED ON THIS PLAT THAT MAY BE FOUND IN THE PUBLIC RECORDS OF PALM BEACH COUNTY.
- BEARINGS SHOWN HEREON ARE REFERENCED TO THE NORTH LINE OF THE NORTHEAST QUARTER OF SECTION 6, TOWNSHIP 43 SOUTH, RANGE 43 EAST, PALM BEACH COUNTY, FLORIDA HAVING A BEARING OF SOUTH 88°03'00" EAST.

LEGEND/ABBREVIATIONS

- - SET PERMANENT REFERENCE MONUMENT
- 4"x4" CONCRETE MONUMENT WITH ALUMINUM DISK STAMPED PRM LB 3591
- - INDICATES SET PERMANENT REFERENCE MONUMENT
- 5/8" IRON ROD WITH CAP STAMPED PRM LB#3591 UNLESS OTHERWISE NOTED.
- ▲ - INDICATES SET PERMANENT REFERENCE MONUMENT
- NAIL & DISK STAMPED PRM LB#3591 UNLESS OTHERWISE NOTED.
- ☉ - CENTERLINE
- AC - ACRES
- LB - LICENSED BUSINESS
- O.R.B. - OFFICIAL RECORD BOOK
- SF - SQUARE FEET
- R - RADIUS
- D - DELTA ANGLE
- L - ARC LENGTH
- PSE - PUMP STATION EASEMENT O.R.B. 6267 PAGE 1056
- SBTT - SOUTHERN BELL TELEPHONE AND TELEGRAPH O.R.B. 2392 PAGE 662